

Nano-T Series

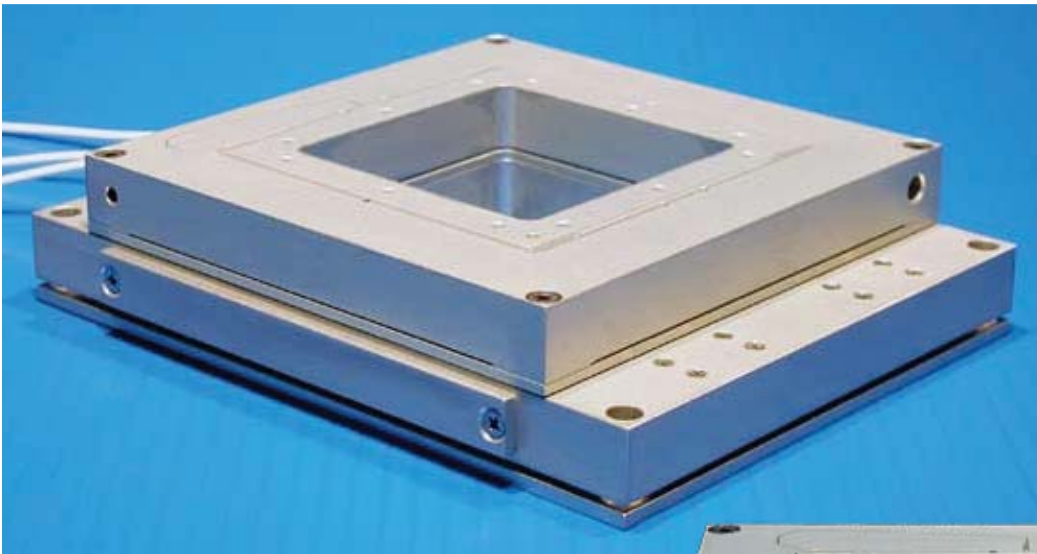
Features

- ▶ Economical multi-axis nanopositioner
- ▶ Two or three axis motion
- ▶ 100 μm or 200 μm XY ranges of motion
- ▶ 20 μm or 50 μm Z range of motion
- ▶ Large aperture
- ▶ **pico**™ sensor technology
- ▶ Closed loop control

Typical Applications

- ▶ Multi-axis alignment
- ▶ Fluorescence imaging
- ▶ Closed-loop AFM scanner

02.583.2511 פז"מ-טק (1991) בע"מ
<Michael.Storch@pazam-tech.co.il>



Nano-T115 (3-axis) constructed from aluminum.

פז"מ-טק (1991) בע"מ

מייקל סטורץ | 02.583.2511

PaZaM-tech@pobox.com

www.PaZaM-tech.co.il

Compatible Software Packages



Image-Pro
AMS

Analog motion
control



MetaMorph™
USB and analog
motion control

Examples, tutorial,
and Nano-Route™ 3D
supplied with Nano-
Drive™ USB interfaces.

µManager
THE OPEN SOURCE
MICROSCOPY SOFTWARE
USB motion control



Nano-T11 (2-axis) constructed from aluminum.

Product Description

The Nano-T Series are economical, multi-axis nanopositioning systems which are available in a variety of configurations. The Nano-T Series have up to 200 microns range of motion in X and Y, and up to 50 microns in Z. The large center aperture accommodates lenses and probes without compromising performance. Internal position sensors utilizing proprietary **pico**™ technology provide

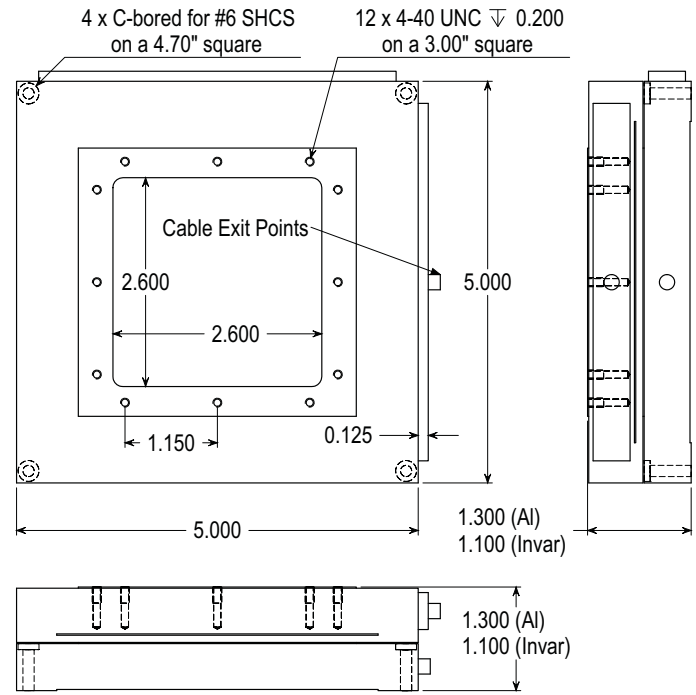
absolute, repeatable position measurement and picometer accuracy under closed loop control. The Nano-T Series is well suited to applications in which precise positioning is required but the overall stage height is not critical. If extremely low profile systems are required, both the Nano-Bio2 and the Nano-LP Series should be considered.

Technical Specifications

Range of motion (X, Y)	100 μ m/200 μ m
Range of motion (Z)	20 μ m/50 μ m
Resolution XY (100/200 μ m)	0.2/0.4 nm
Resolution Z (20/50 μ m)	0.04/0.1 nm
Resonant Frequencies	
X axis (100/200 μ m)	450/400 Hz \pm 20%
Y axis (100/200 μ m)	250/200 Hz \pm 20%
Z axis (20/50 μ m)	450/350 Hz \pm 20%
Stiffness	1.0 N/ μ m
θ_{roll} , θ_{pitch} (typical)	\leq 1 μ rad
θ_{yaw} (typical)	\leq 3 μ rad
Recommended max. load (horizontal)*	0.5 kg
Recommended max. load (vertical)*	0.2 kg
Body Material	Al or Invar
Controller	Nano-Drive™

* Larger load requirements should be discussed with our engineering staff.

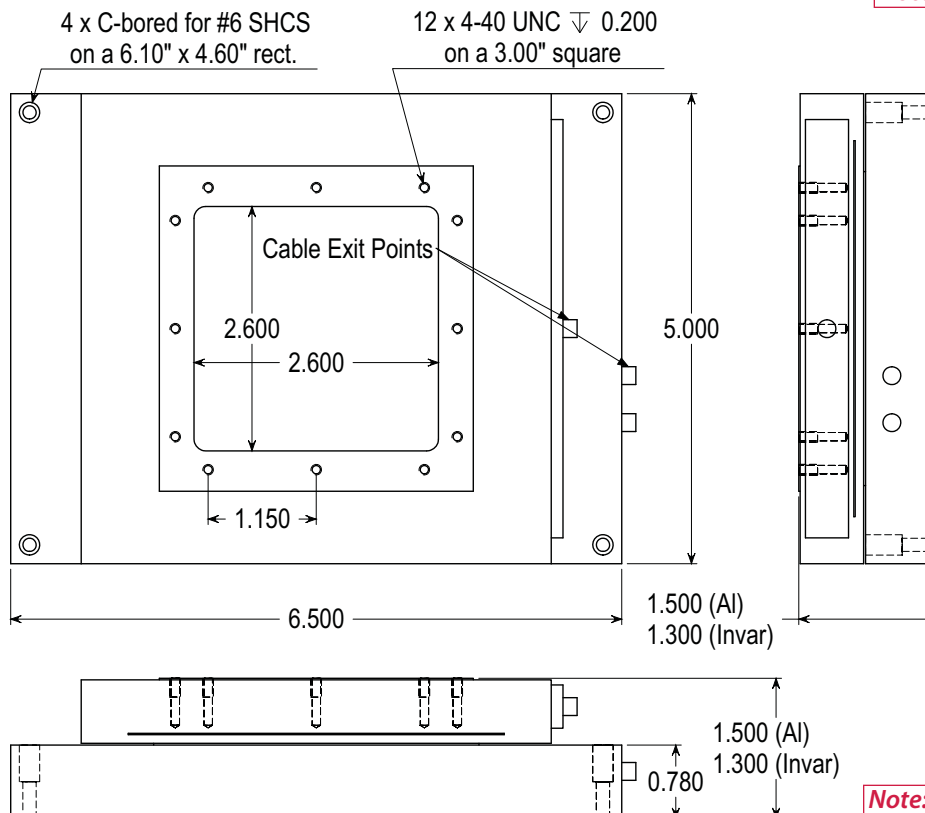
2-Axis Nano-T11 Nano-T22



Note: All Dimensions in Inches

3-Axis

- Nano-T112
- Nano-T115
- Nano-T222
- Nano-T225



Note: All Dimensions in Inches