

Features

- ▶ Compact design
- ▶ Low profile: 0.8"
- ▶ Center aperture: 0.25" diameter
- ▶ Closed loop control
- ▶ **pico**™ sensor technology

Typical Applications

- ▶ High resolution Z-axis alignment
- ▶ AFM
- ▶ Metrology

02.583.2511 פז"מ-טק (1991) בע"מ
<Michael.Storch@pazam-tech.co.il>

LabVIEW Compatible USB Interfaces



Examples, tutorial, and
Nano-Route™ 3D supplied
with Nano-Drive™ USB
interfaces.



Nano-MZ (actual size) constructed from aluminum.

Product Description

The Nano-MZ is a compact Z-axis nanopositioning system with a small center aperture designed to be easily integrated into existing instrumentation where space is restricted. Internal position sensors utilizing proprietary **pico**™ technology provide absolute, repeatable position measurement with picometer accuracy under closed loop control. A related model, the Nano-M3Z, includes

additional “tip” and “tilt” motions (θ_x, θ_y) to the linear motion in the Z-axis. The Nano-MZ can also be used as a “building block” with other systems to form complex nanopositioning assemblies with multi-axis motion - see the Nano-M350 and the Nano-Man5.

Technical Specifications

Range of motion (Z)	25 μ m
Resolution	0.05 nm
Resonant Frequency	1100 Hz \pm 20%
Stiffness	1.0 N/ μ m
Recommended max. load (horizontal)*	0.5 kg
Body Material	Aluminum or Invar
Controller	Nano-Drive™

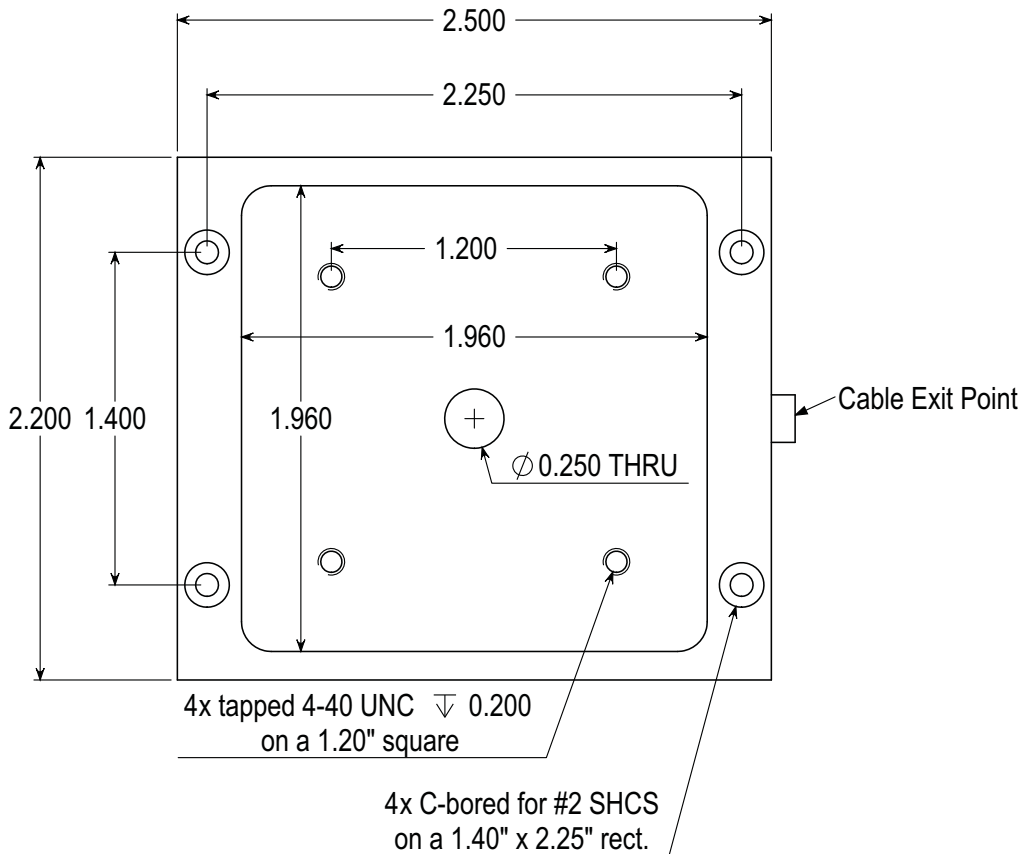
* Larger load requirements should be discussed with our engineering staff.

פז"מ-טק (1991) בע"מ

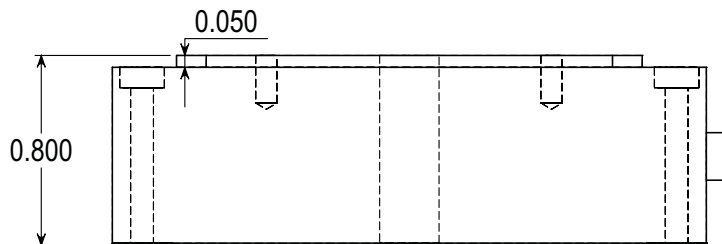
מייקל סטורץ | 02.583.2511

PaZaM-tech@pobox.com

www.PaZaM-tech.co.il



Note: All Dimensions in Inches



02.583.2511 פז"מ-טק (1991) בע"מ
<Michael.Storch@pazam-tech.co.il>

MCL

phone: 608-298-0855

fax: 608-298-9525