

# Nano-CZ200

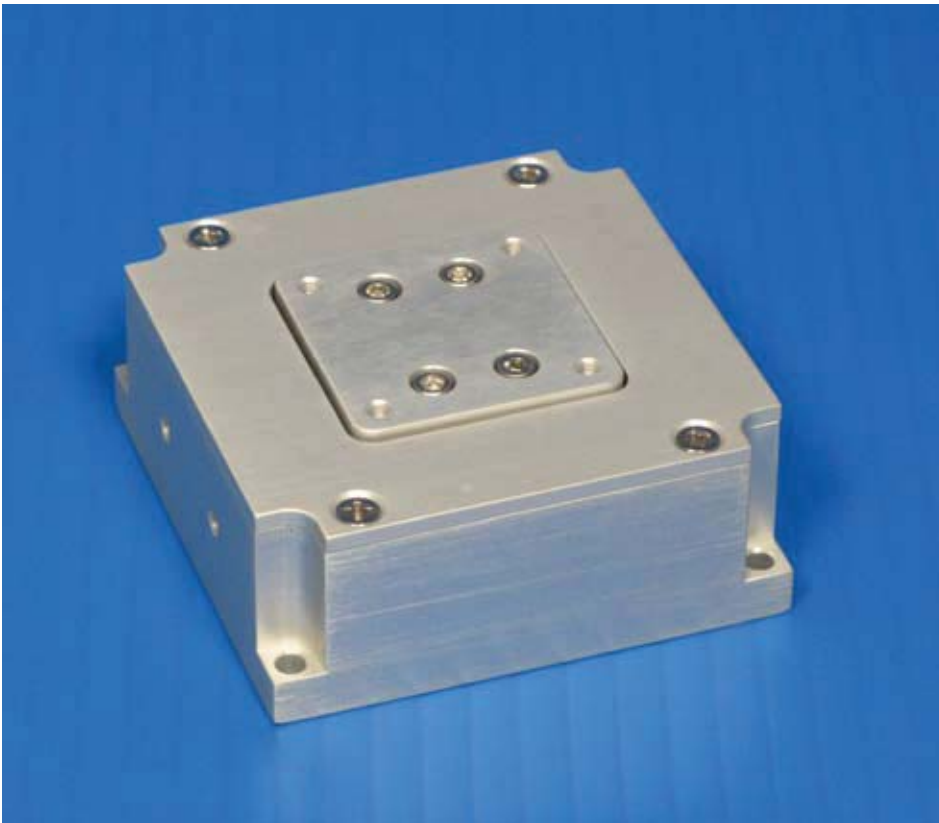
## Features

- ▶ Single axis (Z) motion
- ▶ Long range motion - 200 $\mu$ m
- ▶ Compact size
- ▶ Closed loop control
- ▶ **pico**™ sensor technology

## Typical Applications

- ▶ Precision optical alignment and mirror positioning
- ▶ High resolution probe positioning
- ▶ Metrology

02.583.2511 פז"מ-טק (1991) בע"מ  
<Michael.Storch@pazam-tech.co.il>



Nano-CZ200 constructed from aluminum.

### LabVIEW Compatible USB Interfaces



Examples, tutorial, and  
Nano-Route™ 3D supplied  
with Nano-Drive™ USB  
interfaces.

פז"מ-טק (1991) בע"מ

מייקל סטורץ | 02.583.2511

PaZaM-tech@pobox.com

www.PaZaM-tech.co.il

## Product Description

The Nano-CZ200 is a compact, long range, single axis (Z-axis) precision nanostaging system. Internal position sensors utilizing proprietary **pico**™ technology provide absolute, repeatable position measurement with sub-nanometer resolution under closed loop control. An optional center aperture up to 0.25 inches in diameter

(not shown in the picture) can be provided for applications which require an optical pathway through the stage. The Nano-CZ200 can be operated in any orientation and is ideally suited for precision alignment of optical elements or other components with limited size and weight.

02.583.2511 פז"מ-טק (1991) בע"מ  
<Michael.Storch@pazam-tech.co.il>

**MCL**

phone: 608-298-0855

fax: 608-298-9525

## Technical Specifications

Range of motion (Z) .....	200 $\mu$ m
Resolution .....	1.0 nm
Resonant Frequency .....	500 Hz $\pm$ 20%
Stiffness .....	1.0 N/ $\mu$ m
Recommended max. load (horizontal)* .....	0.5 kg
Recommended max. load (vertical)* .....	0.1 kg
Body Material .....	Aluminum
Controller .....	Nano-Drive™

\* Larger load requirements should be discussed with our engineering staff.

פד"מ-טק (1991) בע"מ

מייקל סטורץ | 02.583.2511

PaZaM-tech@pobox.com

www.PaZaM-tech.co.il

